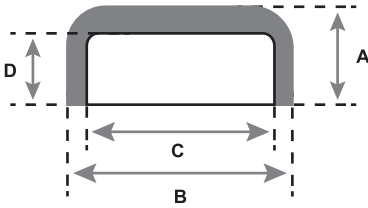


# CAP

# SOCKET WELD

SPECIFICATION: ASME B16.11

PRESSURE RATING: 3000 / 6000 PSIG (WOG)



AVAILABLE ALLOYS: (FERROUS) CARBON STEEL (A105) & STAINLESS STEEL (GRADES 304 / 316 / 321 / 347)  
(NON-FERROUS) CUNI (90/10 & 70/30), NICU (MONEL), ALUMINUM (5086)

\*Additional materials available upon request.

## CLASS 3000

NOMINAL PIPE SIZE	1/8	1/4	3/8	1/2	3/4	1	1 1/4	1 1/2	2	2 1/2	3	4
A	0.688	0.750	0.750	0.875	1.000	1.063	1.188	1.250	1.500	1.563	1.813	2.063
B	0.750	0.875	1.063	1.250	1.500	1.813	2.250	2.500	3.000	3.625	4.313	5.500
C	0.420	0.555	0.690	0.855	1.065	1.330	1.675	1.915	2.406	2.906	3.535	4.545
D	0.375 (MIN.)	0.375 (MIN.)	0.375 (MIN.)	0.375 (MIN.)	0.5 (MIN.)	0.5 (MIN.)	0.5 (MIN.)	0.5 (MIN.)	0.625 (MIN.)	0.625 (MIN.)	0.625 (MIN.)	0.75 (MIN.)

## CLASS 6000

NOMINAL PIPE SIZE	1/8	1/4	3/8	1/2	3/4	1	1 1/4	1 1/2	2	2 1/2	3	4
A	0.861	0.938	0.938	1.000	1.063	1.250	1.313	1.375	1.625	1.688	1.938	2.313
B	0.875	1.063	1.313	1.500	1.750	2.250	2.500	3.000	3.625	4.250	5.000	6.250
C	0.420	0.555	0.690	0.855	1.065	1.330	1.675	1.915	2.406	2.906	3.535	4.545
D	0.375 (MIN.)	0.375 (MIN.)	0.375 (MIN.)	0.375 (MIN.)	0.5 (MIN.)	0.5 (MIN.)	0.5 (MIN.)	0.5 (MIN.)	0.625 (MIN.)	0.625 (MIN.)	0.625 (MIN.)	0.75 (MIN.)

NOTES: Fittings may be ordered with reduced ends.

For P/N's replace X with the following codes:

Carbon Steel - CS

Stainless Steel 321 - 321

Cuni 70/30 - 7

Stainless Steel 304 - 304

Stainless Steel 347 - 347

Nicu (Monel) - M

Stainless Steel 316 - 316

Cuni 90/10 - 9

Aluminum Gr. 5086 - A

All sizes are in inches.