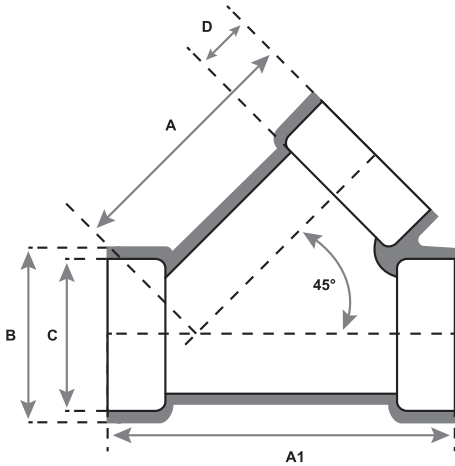


LATERAL

SOCKET WELD

SPECIFICATION: ASME B16.11

PRESSURE RATING: 3000 / 6000 PSIG (WOG)



AVAILABLE ALLOYS: (FERROUS) CARBON STEEL (A105) & STAINLESS STEEL (GRADES 304 / 316 / 321 / 347)
(NON-FERROUS) CUNI (90/10 & 70/30), NICU (MONEL), ALUMINUM (5086)

*Additional materials available upon request.

CLASS 3000

NOMINAL PIPE SIZE	1/8	1/4	3/8	1/2	3/4	1	1 1/4	1 1/2	2	2 1/2
A	1.750	1.750	1.750	1.750	2.125	2.500	2.813	3.188	4.375	5.313
A1	2.500	2.500	2.500	2.500	3.000	3.500	4.000	4.500	6.000	7.500
B	1.500	1.500	1.500	1.500	1.750	2.000	2.438	2.750	3.313	4.000
C	0.426	0.560	0.693	0.859	1.071	1.335	1.682	1.922	2.410	2.910
D	0.375 (MIN.)	0.375 (MIN.)	0.375 (MIN.)	0.375 (MIN.)	0.5 (MIN.)	0.5 (MIN.)	0.5 (MIN.)	0.5 (MIN.)	0.625 (MIN.)	0.625 (MIN.)

CLASS 6000

NOMINAL PIPE SIZE	1/8	1/4	3/8	1/2	3/4	1	1 1/4	1 1/2	2	2 1/2
A	1.750	1.750	1.750	1.750	2.125	2.500	2.813	3.188	4.375	5.313
A1	2.500	2.500	2.500	2.500	3.000	3.500	4.000	4.500	6.000	7.500
B	1.500	1.500	1.500	1.500	1.750	2.000	2.438	2.750	3.313	4.000
C	0.426	0.560	0.693	0.859	1.071	1.335	1.682	1.922	2.410	2.910
D	0.375 (MIN.)	0.375 (MIN.)	0.375 (MIN.)	0.375 (MIN.)	0.5 (MIN.)	0.5 (MIN.)	0.5 (MIN.)	0.5 (MIN.)	0.625 (MIN.)	0.625 (MIN.)

NOTES: Fittings may be ordered with reduced ends.

For P/N's replace X with the following codes:

Carbon Steel - CS

Stainless Steel 321 - 321

Cuni 70/30 - 7

Stainless Steel 304 - 304

Stainless Steel 347 - 347

Nicu (Monel) - M

Stainless Steel 316 - 316

Cuni 90/10 - 9

Aluminum Gr. 5086 - A

All sizes are in inches.