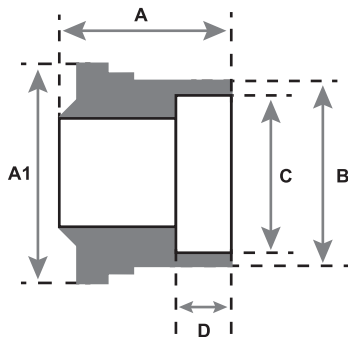


UNION TAILPIECE

INTENDED FOR USE WITH CLASS 200 OR 700
COPPER NICKEL TUBE IAW MIL-T-16420

SERVICE RATING TABLE

Nominal Pipe Size (INCHES)	Maximum Working Pressure (LB/IN ²)	Maximum Temperature (F°)	Maximum Working Pressure (LB/IN ²)	Maximum Temperature (F°)
1/4 through 6	200	425	400	150
Above 6	150	425	250	150



SOCKET WELD

SPECIFICATION: NAVSEA DWG 803-6397430

PRESSURE RATING: 400 PSIG (WOG)



70/30 CUNI
(ALLOY C715/C964)



90/10 CUNI
(ALLOY C706/C962)

AVAILABLE ALLOYS: CUNI 90/10 & CUNI 70/30

NOMINAL PIPE SIZE	1/4	3/8	1/2	3/4	1	1 1/4	1 1/2	2
A	0.87 (+/- .02)	0.96 (+/- .02)	1.05 (+/- .02)	1.15 (+/- .02)	1.3 (+/- .02)	1.47 (+/- .02)	1.62 (+/- .02)	1.85 (+/- .02)
A1	.965 (+/- .005)	1.135 (+/- .005)	1.345 (+/- .005)	1.650 (+/- .005)	1.975 (+/- .005)	2.395 (+/- .005)	2.710 (+/- .005)	3.310 (+/- .005)
B	.828 (+/- .015)	.984 (+/- .015)	1.188 (+/- .015)	1.468 (+/- .015)	1.750 (+/- .015)	2.125 (+/- .015)	2.375 (+/- .015)	2.906 (+/- .015)
C	.545 (+/- .030)	.680 (+/- .030)	.845 (+/- .030)	1.055 (+/- .030)	1.320 (+/- .030)	1.665 (+/- .030)	1.905 (+/- .030)	2.380 (+/- .046)
D	17/64	5/16	3/8	13/32	7/16	1/2	5/8	21/32

NOTES: Fittings may be ordered with reduced ends and/or female threads.

All sizes are in inches.